



# Certificate of Analysis

QA SAMPLE - INFORMATIONAL ONLY

1 of 3

ICAL ID: 20220127-031  
Sample: CA220127-023-052  
Space Gods-Citrus Punch Flavor Gummies  
Strain: Space Gods-Citrus Punch Flavor Gummies  
Category: Ingestible

Prophet Premium Blends, LLC  
Lic. #  
2413 S Broadway  
Santa Ana, CA 92707  
Lic. #

Batch#: Batch# 005  
Batch Size Collected:  
Total Batch Size:  
Collected: 01/28/2022; Received: 01/28/2022  
Completed: 01/28/2022

Moisture NT Water Activity NT	Δ9-THC <b>14.59 mg/unit</b>	CBD <b>16.89 mg/unit</b>	Total Cannabinoids <b>32.28 mg/unit</b>	Total Terpenes NT
--	--------------------------------	-----------------------------	--	----------------------

<b>Summary</b>	SOP Used	Date Tested	Complete
Batch	POT-PREP-002	01/27/2022	Complete



Scan to see results

## Cannabinoid Profile

1 Unit = gummy, 5.18 g.

Analyte	LOQ (mg/g)	LOD (mg/g)	%	mg/g	mg/unit	Analyte	LOQ (mg/g)	LOD (mg/g)	%	mg/g	mg/unit
THCa	0.0128	0.0043	ND	ND	ND	CBDV	0.0046	0.0004	0.003	0.03	0.15
Δ9-THC	0.0046	0.0010	0.282	2.82	14.59	CBN	0.0046	0.0005	0.005	0.05	0.26
Δ8-THC	0.0046	0.0014	ND	ND	ND	CBGa	0.0046	0.0015	ND	ND	ND
THCV	0.0046	0.0006	ND	ND	ND	CBG	0.0046	0.0005	0.004	0.04	0.23
CBDa	0.0049	0.0016	ND	ND	ND	CBC	0.0076	0.0025	0.003	0.03	0.17
CBD	0.0046	0.0008	0.326	3.26	16.89	<b>Total THC</b>			<b>0.28</b>	<b>2.82</b>	<b>14.59</b>
						<b>Total CBD</b>			<b>0.33</b>	<b>3.26</b>	<b>16.89</b>
						<b>Total</b>			<b>0.62</b>	<b>6.23</b>	<b>32.28</b>

Total THC=THCa \* 0.877 + Δ9-THC; Total CBD = CBDa \* 0.877 + CBD. LOD= Limit of Detection, LOQ= Limit of Quantitation, ND= Not Detected, NR= Not Reported. Potency is reported on a dry weight basis. Instrumentation and analysis SOPs used: Cannabinoids:UHPLC-DAD(POT-INST-005),Moisture:Moisture Analyzer(MOISTURE-001),Water Activity:Water Activity Meter(WA-INST-002), Foreign Material:Microscope(FOREIGN-001). Density measured at 19-24 °C, Water Activity measured at 0-90% RH. All QA submitted by the client, All CA State Compliance sampled using SAMPL-SOP-001.

## Terpene Profile

Analyte	LOQ (mg/g)	LOD (mg/g)	%	mg/g	Analyte	LOQ (mg/g)	LOD (mg/g)	%	mg/g
---------	------------	------------	---	------	---------	------------	------------	---	------

NR= Not Reported (no analysis was performed), ND= Not Detected (the concentration is less than the Limit of Detection (LOD)). Analytical instrumentation used: HS-GC-MS; samples analyzed according to SOP TERP-INST-003.



Infinite Chemical Analysis Labs  
8380 Miramar Mall #102  
San Diego, CA  
(858) 623-2740  
www.infiniteCAL.com  
Lic# C8-0000019-LIC

*Josh M Swider*

Josh Swider  
Lab Director, Managing Partner  
01/28/2022

Confident Cannabis  
All Rights Reserved  
support@confidentcannabis.com  
(866) 506-5866  
www.confidentcannabis.com



This product has been tested by Infinite Chemical Analysis, LLC using valid testing methodologies and a quality system as required by state law. All LQC samples were performed and met the prescribed acceptance criteria in 16 CCR section 15730, pursuant to 16 CCR section 15726(e)(13). Values reported relate only to the product tested. Infinite Chemical Analysis, LLC makes no claims as to the efficacy, safety or other risks associated with any detected or non-detected levels of any compounds reported herein. This Certificate shall not be reproduced except in full, without the written approval of Infinite Chemical Analysis, LLC.



# Certificate of Analysis

QA SAMPLE - INFORMATIONAL ONLY

2 of 3

ICAL ID: 20220127-031  
Sample: CA220127-023-052  
Space Gods-Citrus Punch Flavor Gummies  
Strain: Space Gods-Citrus Punch Flavor Gummies  
Category: Ingestible

Prophet Premium Blends, LLC  
Lic. #  
2413 S Broadway  
Santa Ana, CA 92707  
  
Lic. #

Batch#: Batch# 005  
Batch Size Collected:  
Total Batch Size:  
Collected: 01/28/2022; Received: 01/28/2022  
Completed: 01/28/2022

## Residual Solvent Analysis

Category 1	LOQ	LOD	Limit	Status	Category 2	LOQ	LOD	Limit	Status	Category 2	LOQ	LOD	Limit	Status
------------	-----	-----	-------	--------	------------	-----	-----	-------	--------	------------	-----	-----	-------	--------

NR= Not Reported (no analysis was performed), ND= Not Detected (the concentration is less then the Limit of Detection (LOD)). Analytical instrumentation used: HS-GC-MS; samples analyzed according to SOP RS-INST-003.

## Heavy Metal Screening

	LOQ	LOD	Limit	Status
--	-----	-----	-------	--------

NR= Not Reported (no analysis was performed), ND= Not Detected (the concentration is less then the Limit of Detection (LOD)). Analytical instrumentation used: ICP-MS; samples analyzed according to SOP HM-INST-003.

## Microbiological Screening

	Limit	Result	Status
--	-------	--------	--------

ND=Not Detected. Analytical instrumentation used:qPCR; samples analyzed according to SOP MICRO-INST-001.



Infinite Chemical Analysis Labs  
8380 Miramar Mall #102  
San Diego, CA  
(858) 623-2740  
www.infiniteCAL.com  
Lic# C8-0000019-LIC

*Josh M Swider*

Josh Swider  
Lab Director, Managing Partner  
01/28/2022

Confident Cannabis  
All Rights Reserved  
support@confidentcannabis.com  
(866) 506-5866  
www.confidentcannabis.com



This product has been tested by Infinite Chemical Analysis, LLC using valid testing methodologies and a quality system as required by state law. All LQC samples were performed and met the prescribed acceptance criteria in 16 CCR section 15730, pursuant to 16 CCR section 15726(e)(13). Values reported relate only to the product tested. Infinite Chemical Analysis, LLC makes no claims as to the efficacy, safety or other risks associated with any detected or non-detected levels of any compounds reported herein. This Certificate shall not be reproduced except in full, without the written approval of Infinite Chemical Analysis, LLC.



# Certificate of Analysis

QA SAMPLE - INFORMATIONAL ONLY

3 of 3

ICAL ID: 20220127-031  
Sample: CA220127-023-052  
Space Gods-Citrus Punch Flavor Gummies  
Strain: Space Gods-Citrus Punch Flavor Gummies  
Category: Ingestible

Prophet Premium Blends, LLC  
Lic. #  
2413 S Broadway  
Santa Ana, CA 92707  
  
Lic. #

Batch#: Batch# 005  
Batch Size Collected:  
Total Batch Size:  
Collected: 01/28/2022; Received: 01/28/2022  
Completed: 01/28/2022

## Chemical Residue Screening

Category 1	LOQ	LOD	Status	Mycotoxins	LOQ	LOD	Limit	Status
------------	-----	-----	--------	------------	-----	-----	-------	--------

Category 2	LOQ	LOD	Limit	Status	Category 2	LOQ	LOD	Limit	Status
------------	-----	-----	-------	--------	------------	-----	-----	-------	--------

### Other Analyte(s):

NR= Not Reported (no analysis was performed), ND= Not Detected (the concentration is less then the Limit of Detection (LOD)). Analytical instrumentation used: LC-MS-MS & GC-MS-MS; samples analyzed according to SOPs PESTMYCO-LC-INST-004 and PEST-GC-INST-003.



Infinite Chemical Analysis Labs  
8380 Miramar Mall #102  
San Diego, CA  
(858) 623-2740  
www.infiniteCAL.com  
Lic# C8-0000019-LIC

*Josh M Swider*

Josh Swider  
Lab Director, Managing Partner  
01/28/2022

Confident Cannabis  
All Rights Reserved  
support@confidentcannabis.com  
(866) 506-5866  
www.confidentcannabis.com



This product has been tested by Infinite Chemical Analysis, LLC using valid testing methodologies and a quality system as required by state law. All LQC samples were performed and met the prescribed acceptance criteria in 16 CCR section 15730, pursuant to 16 CCR section 15726(e)(13). Values reported relate only to the product tested. Infinite Chemical Analysis, LLC makes no claims as to the efficacy, safety or other risks associated with any detected or non-detected levels of any compounds reported herein. This Certificate shall not be reproduced except in full, without the written approval of Infinite Chemical Analysis, LLC.



# Certificate of Analysis

QA SAMPLE - INFORMATIONAL ONLY

1 of 3

ICAL ID: 20220107-018  
Sample: CA220107-020-103  
Space Gods-Citrus Punch Flavor Gummies  
Strain: Space Gods-Citrus Punch Flavor Gummies  
Category: Ingestible

Prophet Premium Blends, LLC  
Lic. #  
2413 S Broadway  
Santa Ana, CA 92707  
Lic. #

Batch#: Batch# 005  
Batch Size Collected:  
Total Batch Size:  
Collected: 01/13/2022; Received: 01/13/2022  
Completed: 01/13/2022

Moisture <b>0.7%</b> Water Activity <b>0.655 aw</b>	$\Delta$ 9-THC <b>14.66 mg/unit</b>	CBD <b>15.69 mg/unit</b>	Total Cannabinoids <b>31.13 mg/unit</b>	Total Terpenes <b>NT</b>
--	--	-----------------------------	--	-----------------------------

Summary	SOP Used	Date Tested	
Batch			Pass
Cannabinoids	POT-PREP-002	01/07/2022	Complete
Moisture	MOISTURE-001	01/12/2022	0.7%
Water Activity	WA-PREP-001	01/11/2022	Pass - 0.655 aw
Residual Solvents	RS-PREP-001	01/10/2022	Pass
Microbials	MICRO-PREP-001	01/13/2022	Pass
Mycotoxins	PESTMYCO-LC-PREP-001	01/07/2022	Pass
Heavy Metals	HM-PREP-001	01/11/2022	Pass
Foreign Matter	FM-PREP-001	01/07/2022	Pass
Pesticides	PESTMYCO-LC-PREP-001 / PEST-GC-PREP-001	01/07/2022	Pass



Scan to see results

## Cannabinoid Profile

1 Unit = gummy, 4.69 g.

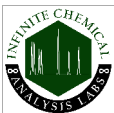
Analyte	LOQ (mg/g)	LOD (mg/g)	%	mg/g	mg/unit	Analyte	LOQ (mg/g)	LOD (mg/g)	%	mg/g	mg/unit
THCa	0.0128	0.0043	ND	ND	ND	CBDV	0.0046	0.0004	0.001	0.01	0.05
$\Delta$ 9-THC	0.0046	0.0010	0.313	3.13	14.66	CBN	0.0046	0.0005	0.005	0.05	0.24
$\Delta$ 8-THC	0.0046	0.0014	ND	ND	ND	CBGa	0.0046	0.0015	ND	ND	ND
THCV	0.0046	0.0006	0.003	0.03	0.14	CBG	0.0046	0.0005	0.004	0.04	0.20
CBDa	0.0049	0.0016	ND	ND	ND	CBC	0.0076	0.0025	0.003	0.03	0.15
CBD	0.0046	0.0008	0.335	3.35	15.69	<b>Total</b>			<b>0.664</b>	<b>6.64</b>	<b>31.13</b>

Total THC=THCa \* 0.877 +  $\Delta$ 9-THC; Total CBD = CBDa \* 0.877 + CBD. LOD= Limit of Detection, LOQ= Limit of Quantitation, ND= Not Detected, NR= Not Reported. Potency is reported on a dry weight basis. Instrumentation and analysis SOPs used: Cannabinoids:UHPLC-DAD(POT-INST-005),Moisture:Moisture Analyzer(MOISTURE-001),Water Activity:Water Activity Meter(WA-INST-002), Foreign Material:Microscope(FOREIGN-001). Density measured at 19-24 °C, Water Activity measured at 0-90% RH. All QA submitted by the client, All CA State Compliance sampled using SAMPL-SOP-001.

## Terpene Profile

Analyte	LOQ (mg/g)	LOD (mg/g)	%	mg/g	Analyte	LOQ (mg/g)	LOD (mg/g)	%	mg/g
---------	------------	------------	---	------	---------	------------	------------	---	------

NR= Not Reported (no analysis was performed), ND= Not Detected (the concentration is less than the Limit of Detection (LOD)). Analytical instrumentation used: HS-GC-MS; samples analyzed according to SOP TERP-INST-003.



Infinite Chemical Analysis Labs  
8380 Miramar Mall #102  
San Diego, CA  
(858) 623-2740  
www.infiniteCAL.com  
Lic# C8-0000019-LIC

*Josh M Swider*

Josh Swider  
Lab Director, Managing Partner  
01/13/2022

Confident Cannabis  
All Rights Reserved  
support@confidentcannabis.com  
(866) 506-5866  
www.confidentcannabis.com



This product has been tested by Infinite Chemical Analysis, LLC using valid testing methodologies and a quality system as required by state law. All LQC samples were performed and met the prescribed acceptance criteria in 16 CCR section 15730, pursuant to 16 CCR section 15726(e)(13). Values reported relate only to the product tested. Infinite Chemical Analysis, LLC makes no claims as to the efficacy, safety or other risks associated with any detected or non-detected levels of any compounds reported herein. This Certificate shall not be reproduced except in full, without the written approval of Infinite Chemical Analysis, LLC.



# Certificate of Analysis

QA SAMPLE - INFORMATIONAL ONLY

2 of 3

ICAL ID: 20220107-018  
Sample: CA220107-020-103  
Space Gods-Citrus Punch Flavor Gummies  
Strain: Space Gods-Citrus Punch Flavor Gummies  
Category: Ingestible

Prophet Premium Blends, LLC  
Lic. #  
2413 S Broadway  
Santa Ana, CA 92707  
  
Lic. #

Batch#: Batch# 005  
Batch Size Collected:  
Total Batch Size:  
Collected: 01/13/2022; Received: 01/13/2022  
Completed: 01/13/2022

## Residual Solvent Analysis

Category 1	LOQ	LOD	Limit	Status	Category 2	LOQ	LOD	Limit	Status	Category 2	LOQ	LOD	Limit	Status			
	µg/g	µg/g	µg/g	µg/g		µg/g	µg/g	µg/g	µg/g		µg/g	µg/g	µg/g	µg/g			
1,2-Dichloro-Ethane	ND	1	0.5	1	Pass	Acetone	ND	300	200	5000	Pass	n-Hexane	ND	35	20	290	Pass
Benzene	ND	1	0.5	1	Pass	Acetonitrile	ND	150	100	410	Pass	Isopropanol	ND	300	200	5000	Pass
Chloroform	ND	1	0.5	1	Pass	Butane	ND	300	200	5000	Pass	Methanol	ND	300	200	3000	Pass
Ethylene Oxide	ND	1	0.5	1	Pass	Ethanol	ND	300	200	5000	Pass	Pentane	ND	300	200	5000	Pass
Methylene-Chloride	ND	1	0.5	1	Pass	Ethyl-Acetate	ND	300	200	5000	Pass	Propane	ND	300	200	5000	Pass
Trichloroethene	ND	1	0.5	1	Pass	Ethyl-Ether	ND	300	200	5000	Pass	Toluene	ND	150	100	890	Pass
						Heptane	ND	300	200	5000	Pass	Xylenes	ND	150	100	2170	Pass

NR= Not Reported (no analysis was performed), ND= Not Detected (the concentration is less than the Limit of Detection (LOD)). Analytical instrumentation used: HS-GC-MS; samples analyzed according to SOP RS-INST-003.

## Heavy Metal Screening

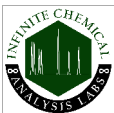
	LOQ	LOD	Limit	Status	
	µg/g	µg/g	µg/g	µg/g	
Arsenic	ND	0.009	0.003	1.5	Pass
Cadmium	ND	0.002	0.001	0.5	Pass
Lead	0.250	0.004	0.001	0.5	Pass
Mercury	ND	0.014	0.005	3	Pass

NR= Not Reported (no analysis was performed), ND= Not Detected (the concentration is less than the Limit of Detection (LOD)). Analytical instrumentation used: ICP-MS; samples analyzed according to SOP HM-INST-003.

## Microbiological Screening

	Limit	Result	Status
	CFU/g	CFU/g	
Aspergillus flavus		NR	NT
Aspergillus fumigatus		NR	NT
Aspergillus niger		NR	NT
Aspergillus terreus		NR	NT
STEC		Not Detected	Pass
Salmonella SPP		Not Detected	Pass

ND=Not Detected. Analytical instrumentation used:qPCR; samples analyzed according to SOP MICRO-INST-001.



Infinite Chemical Analysis Labs  
8380 Miramar Mall #102  
San Diego, CA  
(858) 623-2740  
www.infiniteCAL.com  
Lic# C8-0000019-LIC

*Josh M Swider*

Josh Swider  
Lab Director, Managing Partner  
01/13/2022

Confident Cannabis  
All Rights Reserved  
support@confidentcannabis.com  
(866) 506-5866  
www.confidentcannabis.com



This product has been tested by Infinite Chemical Analysis, LLC using valid testing methodologies and a quality system as required by state law. All LQC samples were performed and met the prescribed acceptance criteria in 16 CCR section 15730, pursuant to 16 CCR section 15726(e)(13). Values reported relate only to the product tested. Infinite Chemical Analysis, LLC makes no claims as to the efficacy, safety or other risks associated with any detected or non-detected levels of any compounds reported herein. This Certificate shall not be reproduced except in full, without the written approval of Infinite Chemical Analysis, LLC.



# Certificate of Analysis

QA SAMPLE - INFORMATIONAL ONLY

3 of 3

ICAL ID: 20220107-018  
Sample: CA220107-020-103  
Space Gods-Citrus Punch Flavor Gummies  
Strain: Space Gods-Citrus Punch Flavor Gummies  
Category: Ingestible

Prophet Premium Blends, LLC  
Lic. #  
2413 S Broadway  
Santa Ana, CA 92707  
Lic. #

Batch#: Batch# 005  
Batch Size Collected:  
Total Batch Size:  
Collected: 01/13/2022; Received: 01/13/2022  
Completed: 01/13/2022

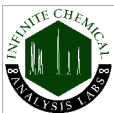
## Chemical Residue Screening

Category 1	LOQ	LOD	Status	Mycotoxins	LOQ	LOD	Limit	Status		
	µg/g	µg/g	µg/g		µg/kg	µg/kg	µg/kg			
Aldicarb	ND	0.065	0.022	Pass	B1	ND	7.88	2.6	Tested	
Carbofuran	ND	0.030	0.009	Pass	B2	ND	6.18	2.04	Tested	
Chlordane	ND	0.075	0.025	Pass	G1	ND	8.99	2.97	Tested	
Chlorfenapyr	ND	0.075	0.025	Pass	G2	ND	5.72	1.89	Tested	
Chlorpyrifos	ND	0.053	0.018	Pass	Ochratoxin A	ND	11.72	3.87	20	Pass
Coumaphos	ND	0.056	0.018	Pass	Total Aflatoxins	ND		20	Pass	
Daminozide	ND	0.079	0.026	Pass						
Dichlorvos	ND	0.067	0.022	Pass						
Dimethoate	ND	0.036	0.012	Pass						
Ethoprophos	ND	0.053	0.017	Pass						
Etofenprox	ND	0.030	0.008	Pass						
Fenoxycarb	ND	0.043	0.014	Pass						
Fipronil	ND	0.045	0.015	Pass						
Imazalil	ND	0.047	0.016	Pass						
Methiocarb	ND	0.047	0.016	Pass						
Mevinphos	ND	0.042	0.014	Pass						
Paclbutrazol	ND	0.040	0.013	Pass						
Parathion Methyl	ND	0.024	0.008	Pass						
Propoxur	ND	0.047	0.016	Pass						
Spiroxamine	ND	0.032	0.011	Pass						
Thiacloprid	ND	0.042	0.014	Pass						

Category 2	LOQ	LOD	Limit	Status	Category 2	LOQ	LOD	Limit	Status		
	µg/g	µg/g	µg/g	µg/g		µg/g	µg/g	µg/g	µg/g		
Abamectin	ND	0.030	0.010	0.3	Pass	Kresoxim Methyl	ND	0.038	0.012	1	Pass
Acephate	ND	0.050	0.016	5	Pass	Malathion	ND	0.035	0.012	5	Pass
Acequinocyl	ND	0.059	0.019	4	Pass	Metalaxyl	ND	0.031	0.010	15	Pass
Acetamiprid	ND	0.044	0.015	5	Pass	Methomyl	ND	0.048	0.016	0.1	Pass
Azoxystrobin	ND	0.029	0.010	40	Pass	Myclobutanil	ND	0.055	0.018	9	Pass
Bifenazate	ND	0.035	0.012	5	Pass	Naled	ND	0.051	0.017	0.5	Pass
Bifenthrin	ND	0.040	0.013	0.5	Pass	Oxamyl	ND	0.046	0.015	0.3	Pass
Boscalid	ND	0.060	0.020	10	Pass	Pentachloronitrobenzene	ND	0.054	0.018	0.2	Pass
Captan	ND	0.358	0.120	5	Pass	Permethrin	ND	0.030	0.008	20	Pass
Carbaryl	ND	0.049	0.016	0.5	Pass	Phosmet	ND	0.038	0.012	0.2	Pass
Chlorantraniliprole	ND	0.063	0.021	40	Pass	Piperonyl Butoxide	ND	0.030	0.008	8	Pass
Clofentezine	ND	0.039	0.013	0.5	Pass	Prallethrin	ND	0.068	0.023	0.4	Pass
Cyfluthrin	ND	0.056	0.019	1	Pass	Propiconazole	ND	0.059	0.019	20	Pass
Cypermethrin	ND	0.044	0.015	1	Pass	Pyrethrins	ND	0.030	0.004	1	Pass
Diazinon	ND	0.030	0.006	0.2	Pass	Pyridaben	ND	0.035	0.012	3	Pass
Dimethomorph	ND	0.042	0.014	20	Pass	Spinetoram	ND	0.030	0.006	3	Pass
Etoxazole	ND	0.030	0.008	1.5	Pass	Spinosad	ND	0.030	0.004	3	Pass
Fenhexamid	ND	0.039	0.013	10	Pass	Spiromesifen	ND	0.042	0.014	12	Pass
Fenpyroximate	ND	0.030	0.010	2	Pass	Spirotetramat	ND	0.041	0.013	13	Pass
Flonicamid	ND	0.081	0.027	2	Pass	Tebuconazole	ND	0.044	0.014	2	Pass
Fludioxonil	ND	0.046	0.015	30	Pass	Thiamethoxam	ND	0.055	0.018	4.5	Pass
Hexythiazox	ND	0.078	0.026	2	Pass	Trifloxystrobin	ND	0.031	0.010	30	Pass
Imidacloprid	ND	0.071	0.023	3	Pass						

### Other Analyte(s):

NR= Not Reported (no analysis was performed), ND= Not Detected (the concentration is less than the Limit of Detection (LOD)). Analytical instrumentation used: LC-MS-MS & GC-MS-MS; samples analyzed according to SOPs PESTMYCO-LC-INST-004 and PEST-GC-INST-003.



Infinite Chemical Analysis Labs  
8380 Miramar Mall #102  
San Diego, CA  
(858) 623-2740  
www.infiniteCAL.com  
Lic# C8-000019-LIC

*Josh M Swider*

Josh Swider  
Lab Director, Managing Partner  
01/13/2022

Confident Cannabis  
All Rights Reserved  
support@confidentcannabis.com  
(866) 506-5866  
www.confidentcannabis.com



This product has been tested by Infinite Chemical Analysis, LLC using valid testing methodologies and a quality system as required by state law. All LQC samples were performed and met the prescribed acceptance criteria in 16 CCR section 15730, pursuant to 16 CCR section 15726(e)(13). Values reported relate only to the product tested. Infinite Chemical Analysis, LLC makes no claims as to the efficacy, safety or other risks associated with any detected or non-detected levels of any compounds reported herein. This Certificate shall not be reproduced except in full, without the written approval of Infinite Chemical Analysis, LLC.



# Certificate of Analysis

QA SAMPLE - INFORMATIONAL ONLY

1 of 3

ICAL ID: 20220127-027  
 Sample: CA220127-023-048  
 Space Gods-Strawberry Mango Flavor Gummies  
 Strain: Space Gods-Strawberry Mango Flavor  
 Gummies  
 Category: Ingestible

Prophet Premium Blends, LLC  
 Lic. #  
 2413 S Broadway  
 Santa Ana, CA 92707  
 Lic. #

Batch#: Batch# 005  
 Batch Size Collected:  
 Total Batch Size:  
 Collected: 01/28/2022; Received: 01/28/2022  
 Completed: 01/28/2022

Moisture NT Water Activity NT	Δ9-THC <b>12.91 mg/unit</b>	CBD <b>15.03 mg/unit</b>	Total Cannabinoids <b>28.63 mg/unit</b>	Total Terpenes NT
--	--------------------------------	-----------------------------	--	----------------------

<b>Summary</b>	SOP Used	Date Tested	
Batch	POT-PREP-002	01/27/2022	Complete
Cannabinoids			Complete



Scan to see results

## Cannabinoid Profile

1 Unit = gummy, 4.7 g.

Analyte	LOQ (mg/g)	LOD (mg/g)	%	mg/g	mg/unit	Analyte	LOQ (mg/g)	LOD (mg/g)	%	mg/g	mg/unit
THCa	0.0128	0.0043	ND	ND	ND	CBDV	0.0046	0.0004	0.003	0.03	0.13
Δ9-THC	0.0046	0.0010	0.275	2.75	12.91	CBN	0.0046	0.0005	0.005	0.05	0.22
Δ8-THC	0.0046	0.0014	ND	ND	ND	CBGa	0.0046	0.0015	ND	ND	ND
THCV	0.0046	0.0006	ND	ND	ND	CBG	0.0046	0.0005	0.004	0.04	0.19
CBDa	0.0049	0.0016	ND	ND	ND	CBC	0.0076	0.0025	0.003	0.03	0.14
CBD	0.0046	0.0008	0.320	3.20	15.03	<b>Total THC</b>			<b>0.27</b>	<b>2.75</b>	<b>12.91</b>
						<b>Total CBD</b>			<b>0.32</b>	<b>3.20</b>	<b>15.03</b>
						<b>Total</b>			<b>0.61</b>	<b>6.09</b>	<b>28.63</b>

Total THC=THCa \* 0.877 + d9-THC; Total CBD = CBDa \* 0.877 + CBD. LOD= Limit of Detection, LOQ= Limit of Quantitation, ND= Not Detected, NR= Not Reported. Potency is reported on a dry weight basis. Instrumentation and analysis SOPs used: Cannabinoids:UHPLC-DAD(POT-INST-005),Moisture:Moisture Analyzer(MOISTURE-001),Water Activity:Water Activity Meter(WA-INST-002), Foreign Material:Microscope(FOREIGN-001). Density measured at 19-24 °C, Water Activity measured at 0-90% RH. All QA submitted by the client, All CA State Compliance sampled using SAMPL-SOP-001.

## Terpene Profile

Analyte	LOQ (mg/g)	LOD (mg/g)	%	mg/g	Analyte	LOQ (mg/g)	LOD (mg/g)	%	mg/g
---------	------------	------------	---	------	---------	------------	------------	---	------

NR= Not Reported (no analysis was performed), ND= Not Detected (the concentration is less than the Limit of Detection (LOD)). Analytical instrumentation used: HS-GC-MS; samples analyzed according to SOP TERP-INST-003.



Infinite Chemical Analysis Labs  
 8380 Miramar Mall #102  
 San Diego, CA  
 (858) 623-2740  
 www.infiniteCAL.com  
 Lic# C8-0000019-LIC

*Josh M Swider*

Josh Swider  
 Lab Director, Managing Partner  
 01/28/2022

Confident Cannabis  
 All Rights Reserved  
 support@confidentcannabis.com  
 (866) 506-5866  
 www.confidentcannabis.com



This product has been tested by Infinite Chemical Analysis, LLC using valid testing methodologies and a quality system as required by state law. All LQC samples were performed and met the prescribed acceptance criteria in 16 CCR section 15730, pursuant to 16 CCR section 15726(e)(13). Values reported relate only to the product tested. Infinite Chemical Analysis, LLC makes no claims as to the efficacy, safety or other risks associated with any detected or non-detected levels of any compounds reported herein. This Certificate shall not be reproduced except in full, without the written approval of Infinite Chemical Analysis, LLC.



# Certificate of Analysis

QA SAMPLE - INFORMATIONAL ONLY

2 of 3

ICAL ID: 20220127-027  
Sample: CA220127-023-048  
Space Gods-Strawberry Mango Flavor Gummies  
Strain: Space Gods-Strawberry Mango Flavor Gummies  
Category: Ingestible

Prophet Premium Blends, LLC  
Lic. #  
2413 S Broadway  
Santa Ana, CA 92707  
Lic. #

Batch#: Batch# 005  
Batch Size Collected:  
Total Batch Size:  
Collected: 01/28/2022; Received: 01/28/2022  
Completed: 01/28/2022

## Residual Solvent Analysis

Category 1	LOQ	LOD	Limit	Status	Category 2	LOQ	LOD	Limit	Status	Category 2	LOQ	LOD	Limit	Status
------------	-----	-----	-------	--------	------------	-----	-----	-------	--------	------------	-----	-----	-------	--------

NR= Not Reported (no analysis was performed), ND= Not Detected (the concentration is less then the Limit of Detection (LOD)). Analytical instrumentation used: HS-GC-MS; samples analyzed according to SOP RS-INST-003.

## Heavy Metal Screening

	LOQ	LOD	Limit	Status
--	-----	-----	-------	--------

NR= Not Reported (no analysis was performed), ND= Not Detected (the concentration is less then the Limit of Detection (LOD)). Analytical instrumentation used: ICP-MS; samples analyzed according to SOP HM-INST-003.

## Microbiological Screening

	Limit	Result	Status
--	-------	--------	--------

ND=Not Detected. Analytical instrumentation used:qPCR; samples analyzed according to SOP MICRO-INST-001.



Infinite Chemical Analysis Labs  
8380 Miramar Mall #102  
San Diego, CA  
(858) 623-2740  
www.infiniteCAL.com  
Lic# C8-0000019-LIC

*Josh M Swider*

Josh Swider  
Lab Director, Managing Partner  
01/28/2022

Confident Cannabis  
All Rights Reserved  
support@confidentcannabis.com  
(866) 506-5866  
www.confidentcannabis.com



This product has been tested by Infinite Chemical Analysis, LLC using valid testing methodologies and a quality system as required by state law. All LQC samples were performed and met the prescribed acceptance criteria in 16 CCR section 15730, pursuant to 16 CCR section 15726(e)(13). Values reported relate only to the product tested. Infinite Chemical Analysis, LLC makes no claims as to the efficacy, safety or other risks associated with any detected or non-detected levels of any compounds reported herein. This Certificate shall not be reproduced except in full, without the written approval of Infinite Chemical Analysis, LLC.





# Certificate of Analysis

QA SAMPLE - INFORMATIONAL ONLY

3 of 3

ICAL ID: 20220127-027  
Sample: CA220127-023-048  
Space Gods-Strawberry Mango Flavor Gummies  
Strain: Space Gods-Strawberry Mango Flavor  
Gummies  
Category: Ingestible

Prophet Premium Blends, LLC  
Lic. #  
2413 S Broadway  
Santa Ana, CA 92707  
Lic. #

Batch#: Batch# 005  
Batch Size Collected:  
Total Batch Size:  
Collected: 01/28/2022; Received: 01/28/2022  
Completed: 01/28/2022

## Chemical Residue Screening

Category 1	LOQ	LOD	Status	Mycotoxins	LOQ	LOD	Limit	Status
------------	-----	-----	--------	------------	-----	-----	-------	--------

Category 2	LOQ	LOD	Limit	Status	Category 2	LOQ	LOD	Limit	Status
------------	-----	-----	-------	--------	------------	-----	-----	-------	--------

### Other Analyte(s):

NR= Not Reported (no analysis was performed), ND= Not Detected (the concentration is less then the Limit of Detection (LOD)). Analytical instrumentation used: LC-MS-MS & GC-MS-MS; samples analyzed according to SOPs PESTMYCO-LC-INST-004 and PEST-GC-INST-003.



Infinite Chemical Analysis Labs  
8380 Miramar Mall #102  
San Diego, CA  
(858) 623-2740  
www.infiniteCAL.com  
Lic# C8-0000019-LIC

*Josh M Swider*

Josh Swider  
Lab Director, Managing Partner  
01/28/2022

Confident Cannabis  
All Rights Reserved  
support@confidentcannabis.com  
(866) 506-5866  
www.confidentcannabis.com



This product has been tested by Infinite Chemical Analysis, LLC using valid testing methodologies and a quality system as required by state law. All LQC samples were performed and met the prescribed acceptance criteria in 16 CCR section 15730, pursuant to 16 CCR section 15726(e)(13). Values reported relate only to the product tested. Infinite Chemical Analysis, LLC makes no claims as to the efficacy, safety or other risks associated with any detected or non-detected levels of any compounds reported herein. This Certificate shall not be reproduced except in full, without the written approval of Infinite Chemical Analysis, LLC.



# Certificate of Analysis

QA SAMPLE - INFORMATIONAL ONLY

1 of 3

ICAL ID: 20220127-029  
Sample: CA220127-023-050  
Space Gods-Watermelon Flavor Gummies  
Strain: Space Gods-Watermelon Flavor Gummies  
Category: Ingestible

Prophet Premium Blends, LLC  
Lic. #  
2413 S Broadway  
Santa Ana, CA 92707  
Lic. #

Batch#: Batch# 005  
Batch Size Collected:  
Total Batch Size:  
Collected: 01/28/2022; Received: 01/28/2022  
Completed: 01/28/2022

Moisture NT Water Activity NT	Δ9-THC <b>13.77 mg/unit</b>	CBD <b>16.03 mg/unit</b>	Total Cannabinoids <b>30.55 mg/unit</b>	Total Terpenes NT
--	--------------------------------	-----------------------------	--	----------------------

<b>Summary</b>	SOP Used	Date Tested	
Batch	POT-PREP-002	01/27/2022	Complete
Cannabinoids			Complete



Scan to see results

## Cannabinoid Profile

1 Unit = gummy, 5.13 g.

Analyte	LOQ (mg/g)	LOD (mg/g)	%	mg/g	mg/unit	Analyte	LOQ (mg/g)	LOD (mg/g)	%	mg/g	mg/unit
THCa	0.0128	0.0043	ND	ND	ND	CBDV	0.0046	0.0004	0.003	0.03	0.14
Δ9-THC	0.0046	0.0010	0.268	2.68	13.77	CBN	0.0046	0.0005	0.005	0.05	0.24
Δ8-THC	0.0046	0.0014	ND	ND	ND	CBGa	0.0046	0.0015	ND	ND	ND
THCV	0.0046	0.0006	ND	ND	ND	CBG	0.0046	0.0005	0.004	0.04	0.22
CBDa	0.0049	0.0016	ND	ND	ND	CBC	0.0076	0.0025	0.003	0.03	0.15
CBD	0.0046	0.0008	0.313	3.13	16.03	<b>Total THC</b>			<b>0.27</b>	<b>2.68</b>	<b>13.77</b>
						<b>Total CBD</b>			<b>0.31</b>	<b>3.13</b>	<b>16.03</b>
						<b>Total</b>			<b>0.60</b>	<b>5.95</b>	<b>30.55</b>

Total THC=THCa \* 0.877 + Δ9-THC; Total CBD = CBDa \* 0.877 + CBD. LOD= Limit of Detection, LOQ= Limit of Quantitation, ND= Not Detected, NR= Not Reported. Potency is reported on a dry weight basis. Instrumentation and analysis SOPs used: Cannabinoids:UHPLC-DAD(POT-INST-005),Moisture:Moisture Analyzer(MOISTURE-001),Water Activity:Water Activity Meter(WA-INST-002), Foreign Material:Microscope(FOREIGN-001). Density measured at 19-24 °C, Water Activity measured at 0-90% RH. All QA submitted by the client, All CA State Compliance sampled using SAMPL-SOP-001.

## Terpene Profile

Analyte	LOQ (mg/g)	LOD (mg/g)	%	mg/g	Analyte	LOQ (mg/g)	LOD (mg/g)	%	mg/g
---------	------------	------------	---	------	---------	------------	------------	---	------

NR= Not Reported (no analysis was performed), ND= Not Detected (the concentration is less than the Limit of Detection (LOD)). Analytical instrumentation used: HS-GC-MS; samples analyzed according to SOP TERP-INST-003.



Infinite Chemical Analysis Labs  
8380 Miramar Mall #102  
San Diego, CA  
(858) 623-2740  
www.infiniteCAL.com  
Lic# C8-0000019-LIC

*Josh M Swider*

Josh Swider  
Lab Director, Managing Partner  
01/28/2022

Confident Cannabis  
All Rights Reserved  
support@confidentcannabis.com  
(866) 506-5866  
www.confidentcannabis.com



This product has been tested by Infinite Chemical Analysis, LLC using valid testing methodologies and a quality system as required by state law. All LQC samples were performed and met the prescribed acceptance criteria in 16 CCR section 15730, pursuant to 16 CCR section 15726(e)(13). Values reported relate only to the product tested. Infinite Chemical Analysis, LLC makes no claims as to the efficacy, safety or other risks associated with any detected or non-detected levels of any compounds reported herein. This Certificate shall not be reproduced except in full, without the written approval of Infinite Chemical Analysis, LLC.



# Certificate of Analysis

QA SAMPLE - INFORMATIONAL ONLY

2 of 3

ICAL ID: 20220127-029  
Sample: CA220127-023-050  
Space Gods-Watermelon Flavor Gummies  
Strain: Space Gods-Watermelon Flavor Gummies  
Category: Ingestible

Prophet Premium Blends, LLC  
Lic. #  
2413 S Broadway  
Santa Ana, CA 92707  
  
Lic. #

Batch#: Batch# 005  
Batch Size Collected:  
Total Batch Size:  
Collected: 01/28/2022; Received: 01/28/2022  
Completed: 01/28/2022

## Residual Solvent Analysis

Category 1	LOQ	LOD	Limit	Status	Category 2	LOQ	LOD	Limit	Status	Category 2	LOQ	LOD	Limit	Status
------------	-----	-----	-------	--------	------------	-----	-----	-------	--------	------------	-----	-----	-------	--------

NR= Not Reported (no analysis was performed), ND= Not Detected (the concentration is less then the Limit of Detection (LOD)). Analytical instrumentation used: HS-GC-MS; samples analyzed according to SOP RS-INST-003.

## Heavy Metal Screening

	LOQ	LOD	Limit	Status
--	-----	-----	-------	--------

NR= Not Reported (no analysis was performed), ND= Not Detected (the concentration is less then the Limit of Detection (LOD)). Analytical instrumentation used: ICP-MS; samples analyzed according to SOP HM-INST-003.

## Microbiological Screening

	Limit	Result	Status
--	-------	--------	--------

ND=Not Detected. Analytical instrumentation used:qPCR; samples analyzed according to SOP MICRO-INST-001.



Infinite Chemical Analysis Labs  
8380 Miramar Mall #102  
San Diego, CA  
(858) 623-2740  
www.infiniteCAL.com  
Lic# C8-0000019-LIC

*Josh M Swider*

Josh Swider  
Lab Director, Managing Partner  
01/28/2022

Confident Cannabis  
All Rights Reserved  
support@confidentcannabis.com  
(866) 506-5866  
www.confidentcannabis.com



This product has been tested by Infinite Chemical Analysis, LLC using valid testing methodologies and a quality system as required by state law. All LQC samples were performed and met the prescribed acceptance criteria in 16 CCR section 15730, pursuant to 16 CCR section 15726(e)(13). Values reported relate only to the product tested. Infinite Chemical Analysis, LLC makes no claims as to the efficacy, safety or other risks associated with any detected or non-detected levels of any compounds reported herein. This Certificate shall not be reproduced except in full, without the written approval of Infinite Chemical Analysis, LLC.



# Certificate of Analysis

QA SAMPLE - INFORMATIONAL ONLY

3 of 3

ICAL ID: 20220127-029  
Sample: CA220127-023-050  
Space Gods-Watermelon Flavor Gummies  
Strain: Space Gods-Watermelon Flavor Gummies  
Category: Ingestible

Prophet Premium Blends, LLC  
Lic. #  
2413 S Broadway  
Santa Ana, CA 92707  
  
Lic. #

Batch#: Batch# 005  
Batch Size Collected:  
Total Batch Size:  
Collected: 01/28/2022; Received: 01/28/2022  
Completed: 01/28/2022

## Chemical Residue Screening

Category 1	LOQ	LOD	Status	Mycotoxins	LOQ	LOD	Limit	Status
------------	-----	-----	--------	------------	-----	-----	-------	--------

Category 2	LOQ	LOD	Limit	Status	Category 2	LOQ	LOD	Limit	Status
------------	-----	-----	-------	--------	------------	-----	-----	-------	--------

### Other Analyte(s):

NR= Not Reported (no analysis was performed), ND= Not Detected (the concentration is less then the Limit of Detection (LOD)). Analytical instrumentation used: LC-MS-MS & GC-MS-MS; samples analyzed according to SOPs PESTMYCO-LC-INST-004 and PEST-GC-INST-003.



Infinite Chemical Analysis Labs  
8380 Miramar Mall #102  
San Diego, CA  
(858) 623-2740  
www.infiniteCAL.com  
Lic# C8-0000019-LIC

*Josh M Swider*

Josh Swider  
Lab Director, Managing Partner  
01/28/2022

Confident Cannabis  
All Rights Reserved  
support@confidentcannabis.com  
(866) 506-5866  
www.confidentcannabis.com



This product has been tested by Infinite Chemical Analysis, LLC using valid testing methodologies and a quality system as required by state law. All LQC samples were performed and met the prescribed acceptance criteria in 16 CCR section 15730, pursuant to 16 CCR section 15726(e)(13). Values reported relate only to the product tested. Infinite Chemical Analysis, LLC makes no claims as to the efficacy, safety or other risks associated with any detected or non-detected levels of any compounds reported herein. This Certificate shall not be reproduced except in full, without the written approval of Infinite Chemical Analysis, LLC.



# Certificate of Analysis

QA SAMPLE - INFORMATIONAL ONLY

1 of 3

ICAL ID: 20220127-028  
Sample: CA220127-023-049  
Space Gods-Wild Berry Flavor Gummies  
Strain: Space Gods-Wild Berry Flavor Gummies  
Category: Ingestible

Prophet Premium Blends, LLC  
Lic. #  
2413 S Broadway  
Santa Ana, CA 92707  
Lic. #

Batch#: Batch# 005  
Batch Size Collected:  
Total Batch Size:  
Collected: 01/28/2022; Received: 01/28/2022  
Completed: 01/28/2022

Moisture NT Water Activity NT	Δ9-THC <b>11.74 mg/unit</b>	CBD <b>13.79 mg/unit</b>	Total Cannabinoids <b>26.17 mg/unit</b>	Total Terpenes NT
--	--------------------------------	-----------------------------	--	----------------------

<b>Summary</b>	SOP Used	Date Tested	
Batch	POT-PREP-002	01/27/2022	Complete
Cannabinoids			Complete



Scan to see results

## Cannabinoid Profile

1 Unit = gummy, 4.39 g.

Analyte	LOQ (mg/g)	LOD (mg/g)	%	mg/g	mg/unit	Analyte	LOQ (mg/g)	LOD (mg/g)	%	mg/g	mg/unit
THCa	0.0128	0.0043	ND	ND	ND	CBDV	0.0046	0.0004	0.003	0.03	0.14
Δ9-THC	0.0046	0.0010	0.267	2.67	11.74	CBN	0.0046	0.0005	0.005	0.05	0.20
Δ8-THC	0.0046	0.0014	ND	ND	ND	CBGa	0.0046	0.0015	ND	ND	ND
THCV	0.0046	0.0006	ND	ND	ND	CBG	0.0046	0.0005	0.004	0.04	0.18
CBDa	0.0049	0.0016	ND	ND	ND	CBC	0.0076	0.0025	0.003	0.03	0.13
CBD	0.0046	0.0008	0.314	3.14	13.79	<b>Total THC</b>			<b>0.27</b>	<b>2.67</b>	<b>11.74</b>
						<b>Total CBD</b>			<b>0.31</b>	<b>3.14</b>	<b>13.79</b>
						<b>Total</b>			<b>0.60</b>	<b>5.96</b>	<b>26.17</b>

Total THC=THCa \* 0.877 + Δ9-THC; Total CBD = CBDa \* 0.877 + CBD. LOD= Limit of Detection, LOQ= Limit of Quantitation, ND= Not Detected, NR= Not Reported. Potency is reported on a dry weight basis. Instrumentation and analysis SOPs used: Cannabinoids:UHPLC-DAD(POT-INST-005),Moisture:Moisture Analyzer(MOISTURE-001),Water Activity:Water Activity Meter(WA-INST-002), Foreign Material:Microscope(FOREIGN-001). Density measured at 19-24 °C, Water Activity measured at 0-90% RH. All QA submitted by the client, All CA State Compliance sampled using SAMPL-SOP-001.

## Terpene Profile

Analyte	LOQ (mg/g)	LOD (mg/g)	%	mg/g	Analyte	LOQ (mg/g)	LOD (mg/g)	%	mg/g
---------	------------	------------	---	------	---------	------------	------------	---	------

NR= Not Reported (no analysis was performed), ND= Not Detected (the concentration is less than the Limit of Detection (LOD)). Analytical instrumentation used: HS-GC-MS; samples analyzed according to SOP TERP-INST-003.



Infinite Chemical Analysis Labs  
8380 Miramar Mall #102  
San Diego, CA  
(858) 623-2740  
www.infiniteCAL.com  
Lic# C8-0000019-LIC

*Josh M Swider*

Josh Swider  
Lab Director, Managing Partner  
01/28/2022

Confident Cannabis  
All Rights Reserved  
support@confidentcannabis.com  
(866) 506-5866  
www.confidentcannabis.com



This product has been tested by Infinite Chemical Analysis, LLC using valid testing methodologies and a quality system as required by state law. All LQC samples were performed and met the prescribed acceptance criteria in 16 CCR section 15730, pursuant to 16 CCR section 15726(e)(13). Values reported relate only to the product tested. Infinite Chemical Analysis, LLC makes no claims as to the efficacy, safety or other risks associated with any detected or non-detected levels of any compounds reported herein. This Certificate shall not be reproduced except in full, without the written approval of Infinite Chemical Analysis, LLC.



# Certificate of Analysis

QA SAMPLE - INFORMATIONAL ONLY

2 of 3

ICAL ID: 20220127-028  
Sample: CA220127-023-049  
Space Gods-Wild Berry Flavor Gummies  
Strain: Space Gods-Wild Berry Flavor Gummies  
Category: Ingestible

Prophet Premium Blends, LLC  
Lic. #  
2413 S Broadway  
Santa Ana, CA 92707  
  
Lic. #

Batch#: Batch# 005  
Batch Size Collected:  
Total Batch Size:  
Collected: 01/28/2022; Received: 01/28/2022  
Completed: 01/28/2022

## Residual Solvent Analysis

Category 1	LOQ	LOD	Limit	Status	Category 2	LOQ	LOD	Limit	Status	Category 2	LOQ	LOD	Limit	Status
------------	-----	-----	-------	--------	------------	-----	-----	-------	--------	------------	-----	-----	-------	--------

NR= Not Reported (no analysis was performed), ND= Not Detected (the concentration is less then the Limit of Detection (LOD)). Analytical instrumentation used: HS-GC-MS; samples analyzed according to SOP RS-INST-003.

## Heavy Metal Screening

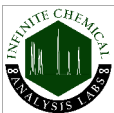
	LOQ	LOD	Limit	Status
--	-----	-----	-------	--------

NR= Not Reported (no analysis was performed), ND= Not Detected (the concentration is less then the Limit of Detection (LOD)). Analytical instrumentation used: ICP-MS; samples analyzed according to SOP HM-INST-003.

## Microbiological Screening

	Limit	Result	Status
--	-------	--------	--------

ND=Not Detected. Analytical instrumentation used:qPCR; samples analyzed according to SOP MICRO-INST-001.



Infinite Chemical Analysis Labs  
8380 Miramar Mall #102  
San Diego, CA  
(858) 623-2740  
www.infiniteCAL.com  
Lic# C8-0000019-LIC

*Josh M Swider*

Josh Swider  
Lab Director, Managing Partner  
01/28/2022

Confident Cannabis  
All Rights Reserved  
support@confidentcannabis.com  
(866) 506-5866  
www.confidentcannabis.com



This product has been tested by Infinite Chemical Analysis, LLC using valid testing methodologies and a quality system as required by state law. All LQC samples were performed and met the prescribed acceptance criteria in 16 CCR section 15730, pursuant to 16 CCR section 15726(e)(13). Values reported relate only to the product tested. Infinite Chemical Analysis, LLC makes no claims as to the efficacy, safety or other risks associated with any detected or non-detected levels of any compounds reported herein. This Certificate shall not be reproduced except in full, without the written approval of Infinite Chemical Analysis, LLC.



# Certificate of Analysis

QA SAMPLE - INFORMATIONAL ONLY

3 of 3

ICAL ID: 20220127-028  
Sample: CA220127-023-049  
Space Gods-Wild Berry Flavor Gummies  
Strain: Space Gods-Wild Berry Flavor Gummies  
Category: Ingestible

Prophet Premium Blends, LLC  
Lic. #  
2413 S Broadway  
Santa Ana, CA 92707  
  
Lic. #

Batch#: Batch# 005  
Batch Size Collected:  
Total Batch Size:  
Collected: 01/28/2022; Received: 01/28/2022  
Completed: 01/28/2022

## Chemical Residue Screening

Category 1	LOQ	LOD	Status	Mycotoxins	LOQ	LOD	Limit	Status
------------	-----	-----	--------	------------	-----	-----	-------	--------

Category 2	LOQ	LOD	Limit	Status	Category 2	LOQ	LOD	Limit	Status
------------	-----	-----	-------	--------	------------	-----	-----	-------	--------

### Other Analyte(s):

NR= Not Reported (no analysis was performed), ND= Not Detected (the concentration is less than the Limit of Detection (LOD)). Analytical instrumentation used: LC-MS-MS & GC-MS-MS; samples analyzed according to SOPs PESTMYCO-LC-INST-004 and PEST-GC-INST-003.



Infinite Chemical Analysis Labs  
8380 Miramar Mall #102  
San Diego, CA  
(858) 623-2740  
www.infiniteCAL.com  
Lic# C8-0000019-LIC

*Josh M Swider*

Josh Swider  
Lab Director, Managing Partner  
01/28/2022

Confident Cannabis  
All Rights Reserved  
support@confidentcannabis.com  
(866) 506-5866  
www.confidentcannabis.com



This product has been tested by Infinite Chemical Analysis, LLC using valid testing methodologies and a quality system as required by state law. All LQC samples were performed and met the prescribed acceptance criteria in 16 CCR section 15730, pursuant to 16 CCR section 15726(e)(13). Values reported relate only to the product tested. Infinite Chemical Analysis, LLC makes no claims as to the efficacy, safety or other risks associated with any detected or non-detected levels of any compounds reported herein. This Certificate shall not be reproduced except in full, without the written approval of Infinite Chemical Analysis, LLC.