



Customer: Cabo Ella Inc.
Customer Sample ID: gummies License # 17-69-01P Batch # 82620-d8-HJM
Laboratory Number: 2010273-03
Servings per Container: 3.9345



Cannabinoid Profile

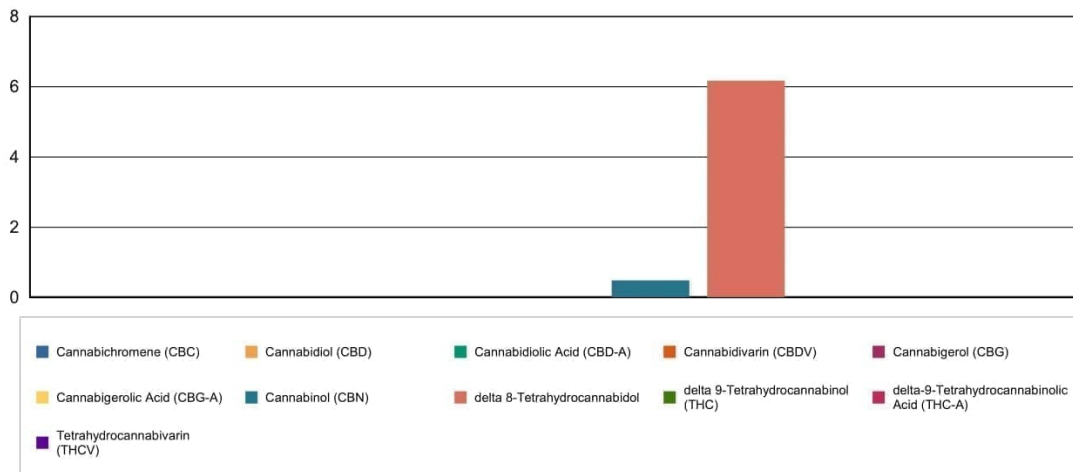
Extraction Technician: DF
Analytical Chemist: CB

Extraction Date(s)	Analysis Date(s)
9/17/2020	9/17/2020

Cannabinoids (HPLC)		Results		
	LOD (mg/g)	%	mg/g	mg/gummy
Cannabidiol (CBD)	<0.003			
Cannabidiolic Acid (CBD-A)	<0.003			
Cannabigerolic Acid (CBG-A)	<0.003			
Cannabigerol (CBG)	<0.003			
Cannabidiol (CBD)		0.0004	0.00404	0.016
Tetrahydrocannabivarin (THCV)	<0.003			
Cannabinol (CBN)		0.05	0.484	1.91
delta 9-Tetrahydrocannabinol (THC)	<0.003			
delta 8-Tetrahydrocannabinol		0.62	6.17	24.3
Cannabichromene (CBC)	<0.003			
delta-9-Tetrahydrocannabinolic Acid (THC-A)	<0.003			
Cannabinoids Total		%	mg/g	
Max Active THC		0.00	0.00	
Max Active CBD		0.00	0.00	
T.Active Cannabinoids		0.05	0.49	
Total Cannabinoids		0.67	6.66	

Following USDA guidelines on uncertainty, Altitude Consulting's uncertainty are calculated for CBDa and CBD at +/- 4%. The uncertainty for THCa and THC are +/- 5%. This implies the range for a 10% value of CBD to be 9.6-10.4%. The uncertainty range for a 0.30% value of THC would be 0.28-0.32%.

Cannabinoid (mg/g)



Reporting Limits will vary based on sample extraction weight used for the analysis. Altitude Consulting, LLC utilizes NIST traceable Reference Standards and Certified Reference Material to calibrate analytical instruments along with proven analytical methods. The methods are applied in the most ethical manner following good laboratory practice guidelines. The results of this report are based solely on the sample submitted and cannot be reproduced.